

**Techart**

консалтинговая  
группа

# Russian PET-diagnostics market: fast facts

Moscow, 2019



RESEARCH.TEChart

MARKETING RESEARCH, BUSINESS PLANNING, CONSULTING



Vera Shumilina

analyst

Techart specializes in medical market research. Since 2009, we have completed over 150 research and consulting projects in the markets of medical devices, pharmaceuticals, equipment and services.

In particular, in 2011-2014, for the largest market participants, we were conducting a series of comprehensive studies of the markets of nuclear medicine and radiation therapy, which were subsequently updated and supplemented more than once.

In this review, we want to present you some facts about the positron emission tomography market in Russia.

In case you need in-depth information or individual consultation, please contact us.



150  
projects

since 2009



Research projects  
for major market  
participants

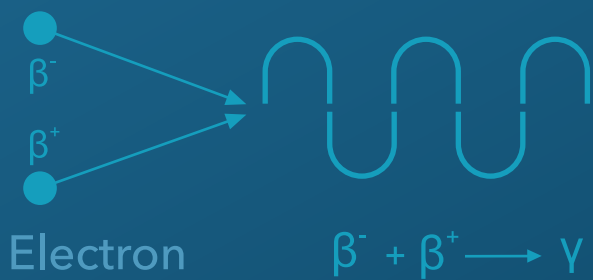
in 2011-2014

# Positron emission tomography

Positron emission tomography (PET) is a functional imaging method that is used to observe metabolic processes in the body as an aid to the diagnosis of disease.

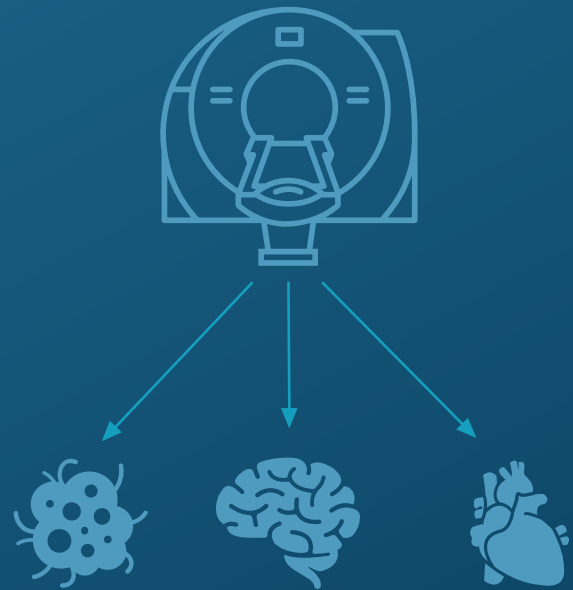
The method is based on the registration of a pair of gamma rays arising from the annihilation of positrons with electrons. (source: [Wikipedia](#))

Electron      Gamma-quantum



# Oncology, Neurology, Cardiology

PET/CT techniques are used in oncology, neurology and cardiology.



# Metabolic and structural changes

Positron emission tomography is usually combined with computed tomography (PET / CT), which allows one study to evaluate metabolic (according to PET) and structural (according to CT) changes in certain organs and tissues.



## 90% of PET/CT procedures

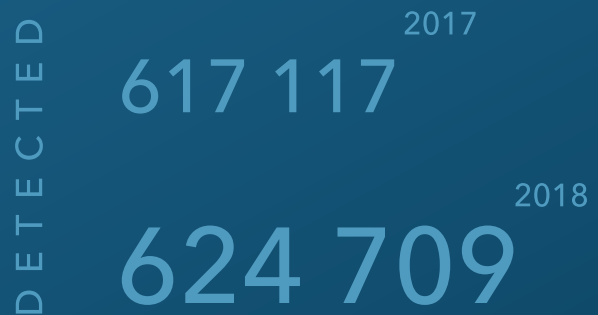
Today, around the world, 90% of PET/CT procedures are conducted in patients with malignant neoplasms.



## 624,709 new cases of cancer

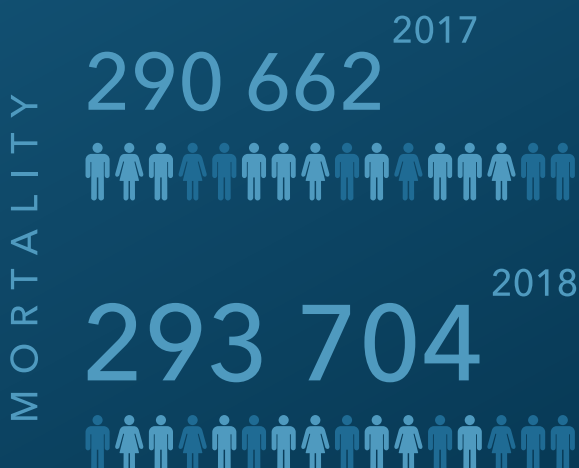
In Russia, in 2018, 624.7 thousand new cases of cancer were detected (+7.5 thousand to the 2017 indicator).

In total, 3.8 million Russians were registered with cancer.



## High mortality rates

Oncology takes the second place in the structure of mortality in the Russian population (16.1% in 2018). The absolute number of deaths from cancer was 297,704 in 2018. The mortality rate from malignant neoplasms slightly decreased in the last 10 years and in 2018 amounted to 200 cases per 100 thousand population.



## 43 medical organizations

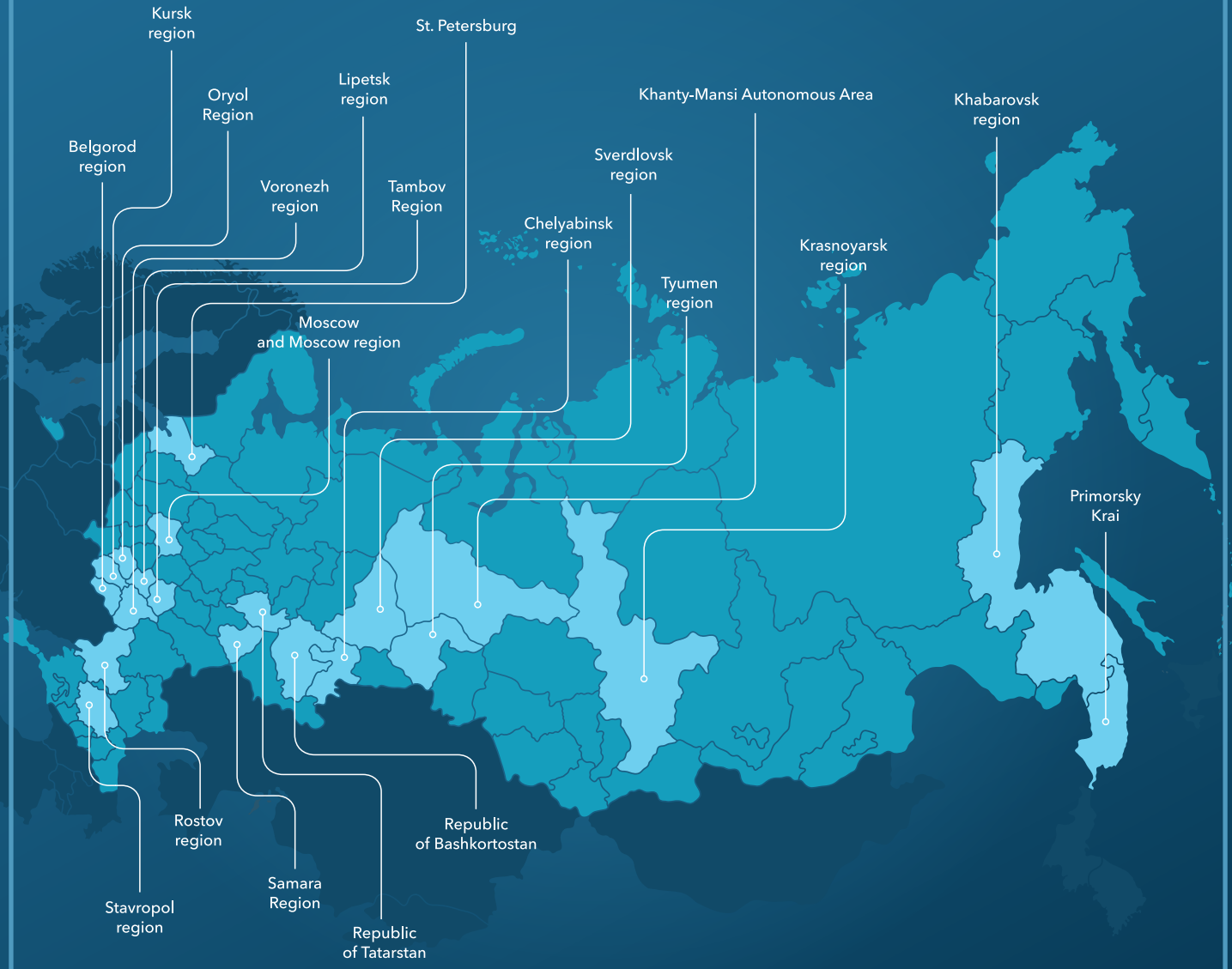
43 medical organizations provided PET-diagnostic services.

## 59 PET scanners in Russia

59 PET scanners operated in Russia in 2018.

# 21 region of Russia

In 21 Russian regions, there were medical organizations providing PET-diagnostic services.



## 0.4 PET-scanners per 1 million people

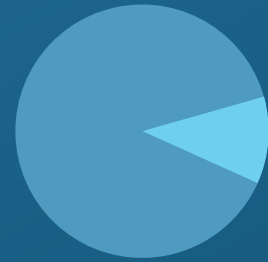
Availability of equipment for positron emission tomography in 2018  
0.4 PET-scanners per 1 million people



# > 100,000 PET-diagnostic procedures

> 100,000 PET-diagnostic procedures were conducted in 2018, ~ 86% of them at the expense of the compulsory health insurance fund.

86%  
Compulsory health  
insurance services



14%  
Paid  
services

# 748 PET-diagnostic

748 PET-diagnostic procedures per million people - an indicator of 2018, which is significantly lower than in developed European countries:

9 501  
Belgium

8 943  
Denmark

7 484  
France

5 943  
Netherlands

5 242  
Italy

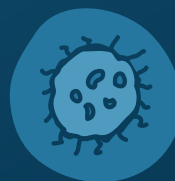
\* Europe, 2017 r.

## Government forecast:



### 185 cases

per 100 thousand of the population -  
cancer mortality by 2024



### 60%

the proportion of malignant  
neoplasms detected in the early  
stages, by 2024



### 80 thousand PET studies

on Compulsory Health Insurance  
in Moscow by 2022



### + 60 PET centers

by 2024

Techart

# Techart Consulting Group

[www.techart.ru](http://www.techart.ru)

Marketing analysis department  
Research.Techart: marketing consulting,  
strategy, research, business planning  
and feasibility studies



[facebook.com/Techart.Research/](https://facebook.com/Techart.Research/)



[research@techart.ru](mailto:research@techart.ru)



+7 (495) 790-7591 \*140

Techart specialization is

b2b-markets, including the following  
profile areas:

- Construction and repair
- Innovative markets
- Waste recycling
- Energy and energy efficiency
- Agriculture
- Oil and gas and chemical industry
- Wood processing
- Industrial equipment
- Medicine and cosmetology